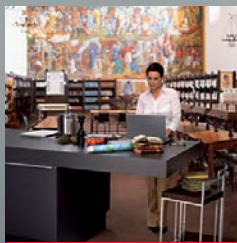
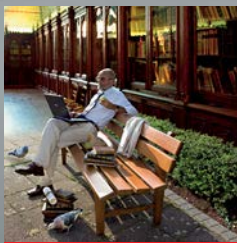




OS 12000 A1

Easy, fast
and effective



Innovative and
ergonomic

 **ZEUTSCHEL**
The Future of the Past.

OS 12000 A1

Easy, fast
and effective



*“Nothing is stronger
than an idea whose
time has come.”*

Victor Hugo (1802–1885)

Form follows function. Innovative design, the latest lighting technology and easy-to-use functions are the features of our new generation of A1 scanners. Everything you need to digitize large-format documents, books and maps. The OS 12000 A1 high precision scanner is the ideal, future-proof solution. The rear, glare-free illumination and the intuitive operating system, with monitor image viewing, provide perfect results. Faulty scans and uneven illumination are thus things of the past. The OS 12000 range is particularly kind to documents and is user-friendly thanks to its very high processing speed. The low level of light emission does not just protect valuable documents but also makes handling safe, efficient, and ergonomically functional. With its functional form, the OS 12000 makes scanning child's play. It combines innovation and intuition in a unique way – and wins everyone over with its top design.

Product advantages

- high scan speed
- ROI-scan feature (limitation of scan area)
- high productivity
- best results with automatic color management
- Perfect Book – 3D scan technology for perfect book curve correction and automatic document detection
- no UV/IR radiation
- low exposure to light (illumination will only be activated when scanning)
- no reflections with high gloss originals
- excellent cost-performance ratio

Specifications

Description: overhead tabletop scanner for books, newspapers, and large-format documents (certificates, drawings, maps)

Scan area: 846 x 600 mm
(> DIN A1, D-size)

Book cradle: maximum book thickness 170 mm, book cradle with glass plate (scanning with and without glass plate)

Auto focus approx. 50 mm

Scan mode:

36 bit color / output 24 bit color,

12 bit gray / output 8 bit gray,

1 bit b&w / output 1 bit b&w

Maximum resolution: 100 – 600 ppi

Scan speed:

5 seconds / 300 ppi (A1 color)

Scanner interface: Firewire

Perfect Book (optional): 3D scan technology for perfect book curve correction and automatic document detection

Data display: all standard formats, e.g. Tiff uncompressed, TIFF G4, JPEG, JP2, Multipage Tiff, PDF, BMP, PCX, PNG

User software: software OS 11 and/or OS 12 for high productivity



Image processing/image enhancement

software (optional):

integrated color management, contrast improvement, image rotation, despeckle, deskewing, cropping, masking, b&w scanning with dynamic threshold, etc.

Power requirements: 230 V, 50/60 Hz, 1.1 A, other voltages on request

Dimensions:

(w x d x h): 1130 mm x 1050 mm x

1500 mm; foot print 940 x 840 mm

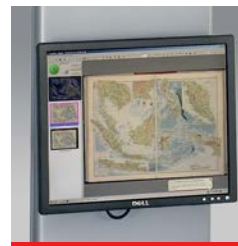
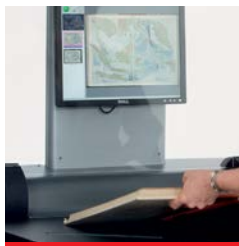
Accessories:

PC, monitor, workstation

We reserve the right to make technical changes without notice.

If you are looking for a perfect solution for digitization and preservation of valuable cultural assets and documents, talk to us. For 50 years we have been managing all processes of document capturing, archiving, processing and provision of digital data with our analog and digital systems for scanning and microfilm technology at the highest level.

Our systems are used worldwide by renowned archives, libraries, universities, land registries as well as commercial enterprises and service providers.



The Future of the Past



Zeutschel GmbH · Heerweg 2 · 72070 Tübingen
Tel.: +49 7071 9706-0 · Fax: +49 7071 9706-44
info@zeutschel.de · www.zeutschel.com